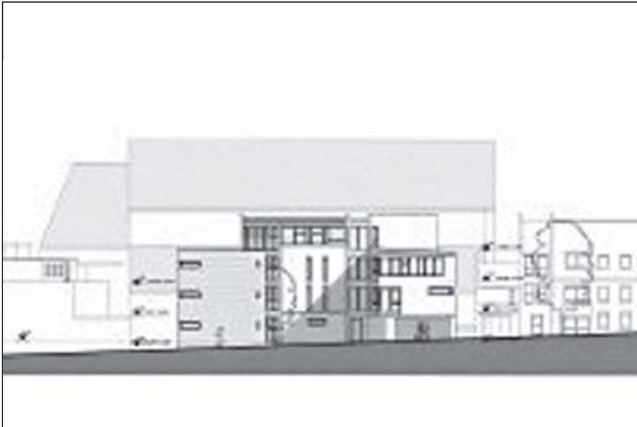


NOT TO SCALE, FOR INFORMATION ONLY © CROWN COPYRIGHT ES100004608



PROPOSED ELEVATION

LOT 87

Site rear of 59-75 High Street, Gillingham, Kent ME7 1BJ

Freehold Vacant Development Site with Planning Permission

Location & Description

An irregular shaped cleared open site of about 0.12 acre to the rear of the pedestrianised High Street which has a wide range of amenities immediately available. The site fronts the east side Saxon Street, a cul-de-sac accessed from Lock Street. Gillingham mainline station is about 1 mile distant.

Planning

Permission has been granted by Medway Council (Tel: 01634 331700) on 22.08.2008 under application No. MC2008/1076 for the construction of two blocks comprising 7x 2 bedroom flats, 2 x 1 bedroom flats with provision for eight on-site car parking spaces.

Total site area: approximately 0.12 acre (0.049 hectares)

Offered **VACANT**

CONTACT: 020 7228 5864

GUIDE PRICE: £160,000 plus