

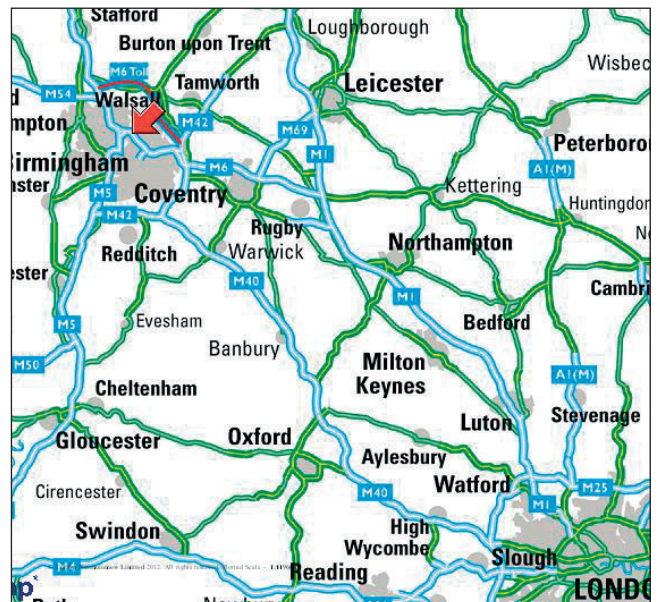
- > substantial grade II\* listed Georgian country house with approximately 150 acres of land
- > requires restoration and may offer further development potential within grounds
- > full vacant possession *by order of the trustees*

## Great Barr Hall Estate, Great Barr, West Midlands, B43 7BB



### location:

Nestled in isolation in a secluded valley, offering complete privacy, yet with superb road links to Birmingham City Centre, some five miles away, the M6 Motorway, A34 and Birmingham International Airport.



©Crown Copyright. Licence Number: ES 100020372

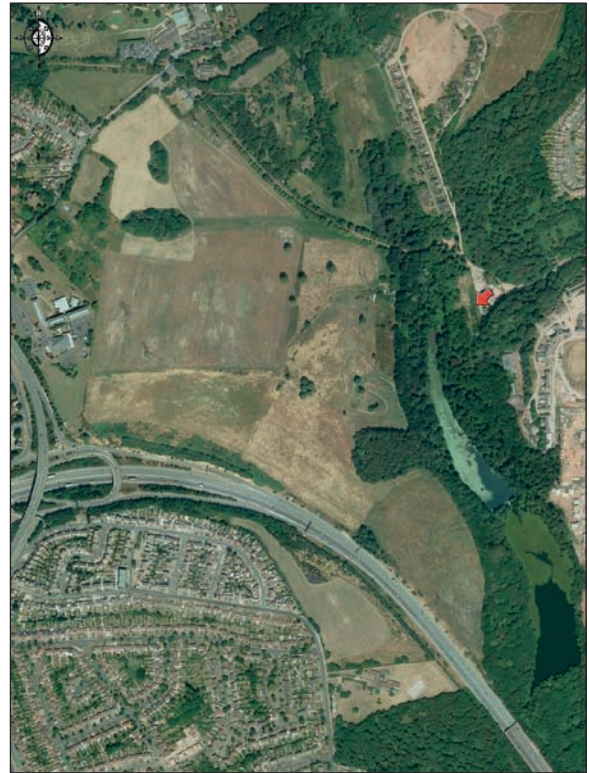


description:

Arguably the most important Grade II Listed Georgian Country House in the ancient county of Stafford. This substantial property is set in a truly unique location with spectacular views across its own two lakes, and occupies approximately 150 acres of historic Grade II\* parkland. A romantic ruin now in need of complete restoration. There is a wealth of historic landscaped features including 18th Century carriage drives along both sides of the lakes, and the Estate is believed to have been embellished by Humphry Repton, John Nash, George Scott and William Shenstone. We are favoured with instructions by way of special dispensation from the trustees, to find a suitable custodian to safe guard this magnificent estate.



Illustration plan ©Crown Copyright. Licence Number: ES 100020372



©Crown Copyright. Licence Number: ES 100020372

planning:

The hall offers scope to be increased or reduced in size and subject to consent, lends itself readily as a boutique hotel, nursing home or company headquarters. There may also be further scope for a bespoke residential development.

to view:

Strictly by arrangement with the joint auctioneers:

Van Weenen,  
Tel: 01234 714 003  
sales@vanweenens.com

